



JONGMIN LEE

PROFESSOR

DEPT. OF REHABILITATION MEDICINE, SCHOOL OF MEDICINE

e-mail: leej@kuh.ac.kr

Educations

- 1989 M.D., Seoul National University College of Medicine, Seoul, South Korea
- 1994 M.S., Seoul National University College of Medicine, Seoul, South Korea
- 2000 Ph.D., Seoul National University College of Medicine, Seoul, South Korea

Professional Background

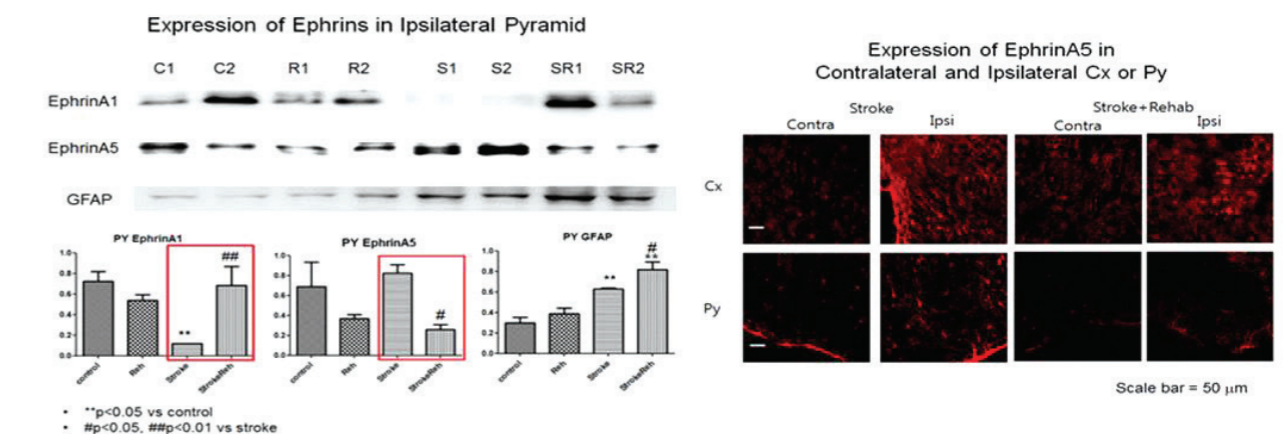
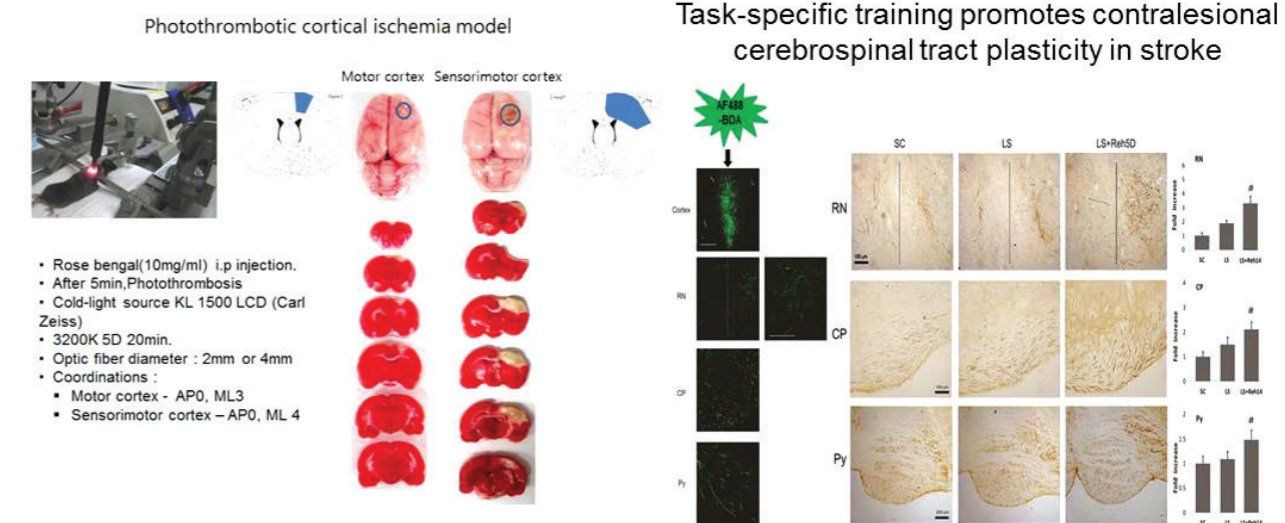
- 2010-Present Professor and Chairman: Department of Rehabilitation Medicine, Konkuk University School of Medicine, Seoul, South Korea
- 2010-2014 Director: Office of Strategic Planning and Coordination, Konkuk University Medical Center, Seoul, South Korea
- 2009-2014 Vice Director: Institute of Biomedical Science and Technology, Konkuk University, Seoul, South Korea
- 2007-2009 Vice Dean of Academic Affairs: Konkuk University School of Medicine, Seoul, South Korea
- 2006-Present Adjunct Professor: Center for Geriatric Neuroscience Research, Institute for Biomedical Science and Technology, Konkuk University, Seoul, South Korea
- 2005-2010 Associate Professor and Chairman: Department of Rehabilitation Medicine, Konkuk University School of Medicine, Seoul, South Korea
- 2003-2005 Visiting Scientist/Postdoctoral Research Associate: Department of Neuroscience, Weil Medical College of Cornell University at Burke Medical Research Institute, White Plains, NY, USA
- 1999-2002 Assistant Professor: Department of Rehabilitation Medicine, Dongguk University College of Medicine, Gyeongju, South Korea
- 1997-2002 Chairman: Department of Rehabilitation Medicine, Dongguk University Pohang Hospital, Pohang, South Korea
- 1997-1999 Instructor: Department of Rehabilitation Medicine, Dongguk University College of Medicine, Gyeongju, South Korea
- 1994-1997 Staff Physiatrist: National Rehabilitation Hospital, Seoul, South Korea

Top 5 Publications

- Choi DH, Kim JH, Lee KH, Kim HY, Kim YS, Choi WS, **Lee J.** Role of neuronal NADPH oxidase 1 in the peri-infarct regions after stroke. *PloS one.* 2015; 10(1):e0116814.
- Choi DH, Lee KH, Kim JH, Seo JH, Kim HY, Shin CY, Han JS, Han SH, Kim YS, **Lee J.** NADPH oxidase 1, a novel molecular source of ROS in hippocampal neuronal death in vascular dementia. *Antioxidants & redox signaling.* 2014; 21(4):533-50.
- Lee KH, Kim JH, Choi DH, **Lee J.** Effect of task-specific training on functional recovery and corticospinal tract plasticity after stroke. *Restor Neurol Neurosci.* 2013;31(6):773-85.
- Hasan MR, Kim JH, Kim YJ, Kwon KJ, Shin CY, Kim HY, Han SH, Choi DH, **Lee J.** Effect of HDAC inhibitors on neuroprotection and neurite outgrowth in primary rat cortical neurons following ischemic insult. *Neurochem Res.* 2013; 38(9):1921-34.
- Lee J.** Kim YS, Choi DH, Bang MS, Han TR, Joh TH, Kim SY. Transglutaminase 2 induces nuclear factor-kappaB activation via a novel pathway in BV-2 microglia. *J Biol Chem.* 2004 Dec 17;279(51):53725-35.

RESEARCH INTERESTS

Neurorepair in Stroke



To develop the new therapeutic strategy to enhance functional recovery in chronic stroke patients, we investigate the effect of combined treatment of epigenetic modification and axonal

inhibitory molecule modification with rehabilitation treatment (task-specific training); and establish the most optimal treatment options with their molecular and cellular mechanism.