



WU-CHUL SONG

PROFESSOR

DEPT. OF ANATOMY,
SCHOOL OF MEDICINE

e-mail: anatomy@kku.ac.kr

Educations

- 2000 M.D., Konkuk University, Seoul, Korea
- 2002 M.S., Konkuk University, Seoul, Korea
- 2006 Ph.D., Konkuk University, Seoul, Korea

Professional Background

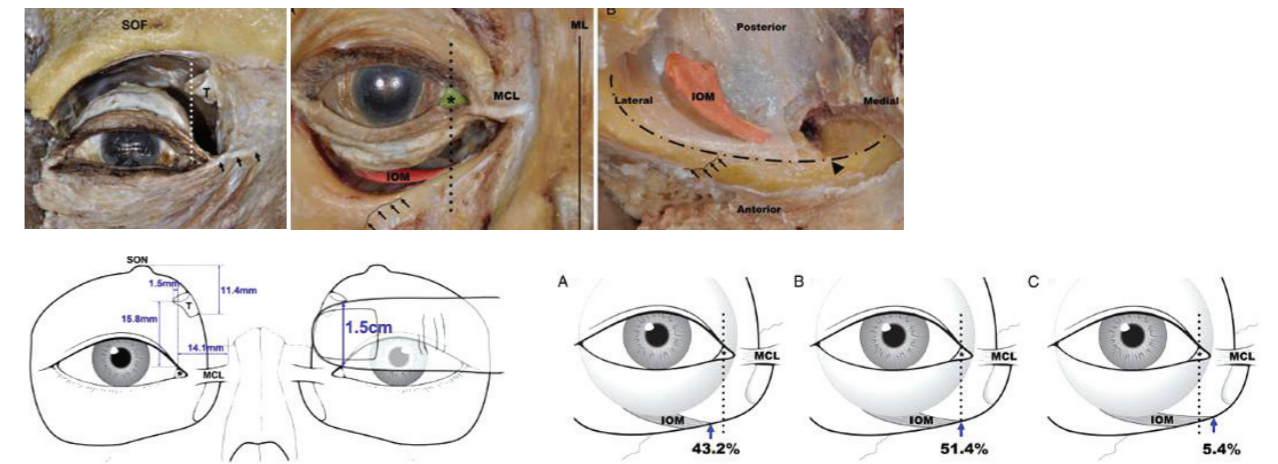
- 2011-Present Professor: Konkuk University School of Medicine
- 2011-2015 Associate professor: Konkuk University School of Medicine
- 2009-Present Member: Korean Association of Oral Anatomists
- 2007-2011 Assistant professor: Konkuk University School of Medicine
- 2000-2006 Assistant: Konkuk University School of Medicine
- 2000-Present Member: Korean Association of Anatomists
- 2000-Present Member: Korean Association of Physical Anthropologists

Top 5 Publications

- Shin KJ, Gil YC, Kim JN, Yoo JY, Kim SH, Choi HG, Shin HJ, Koh KS, **Song WC**: Assessment of Normal Eyeball Protrusion Using Computed Tomographic Imaging and Three-Dimensional Reconstruction in Korean Adults. *Semin Ophthalmol* (in press)
- Gil YC, Shin KJ, Lee SH, Koh KS, **Song WC**: Anatomy of the deep branch of the ulnar nerve. *J Hand Surg Eur Vol*(in press)
- Lee JY, Gil YC, Shin KJ, Kim JN, Joo SH, Koh KS, **Song WC**: An anatomical and morphometric study of the coccyx using three-dimensional reconstruction. *Anat Rec* 299(3):307-12, 2016
- Shin HJ, Gil YC, Shin KJ, Shin GC, Koh KS, **Song WC**: Identification of the trochlea with reference to the lacrimal caruncle, and its significance as a landmark in orbitofacial surgery. *J Plast Reconstr Aest Surg* 68(3):351-355, 2015.
- Kim JN, Lee JY, Shin KJ, Gil YC, Koh KS, **Song WC**: Morphological and morphometric study of the androgenetic alopecic scalp using two- and three-dimensional analysis comparing regional differences. *Br J Dermatol* 170(6):1313-1318, 2014

RESEARCH INTERESTS

1. Clinical Anatomy Focusing on Surgical Aspects



2. Three-Dimensional Morphologic Study of Microstructures

