



KI-SEOK KOH

PROFESSOR

DEPT. OF ANATOMY,
SCHOOL OF MEDICINE

e-mail: kskoh@kku.ac.kr

Educations

- 1982 B.S., Yonsei University, Seoul, Korea
- 1984 M.S., Yonsei University, Seoul, Korea
- 1992 Ph.D., Yonsei University, Seoul, Korea

Professional Background

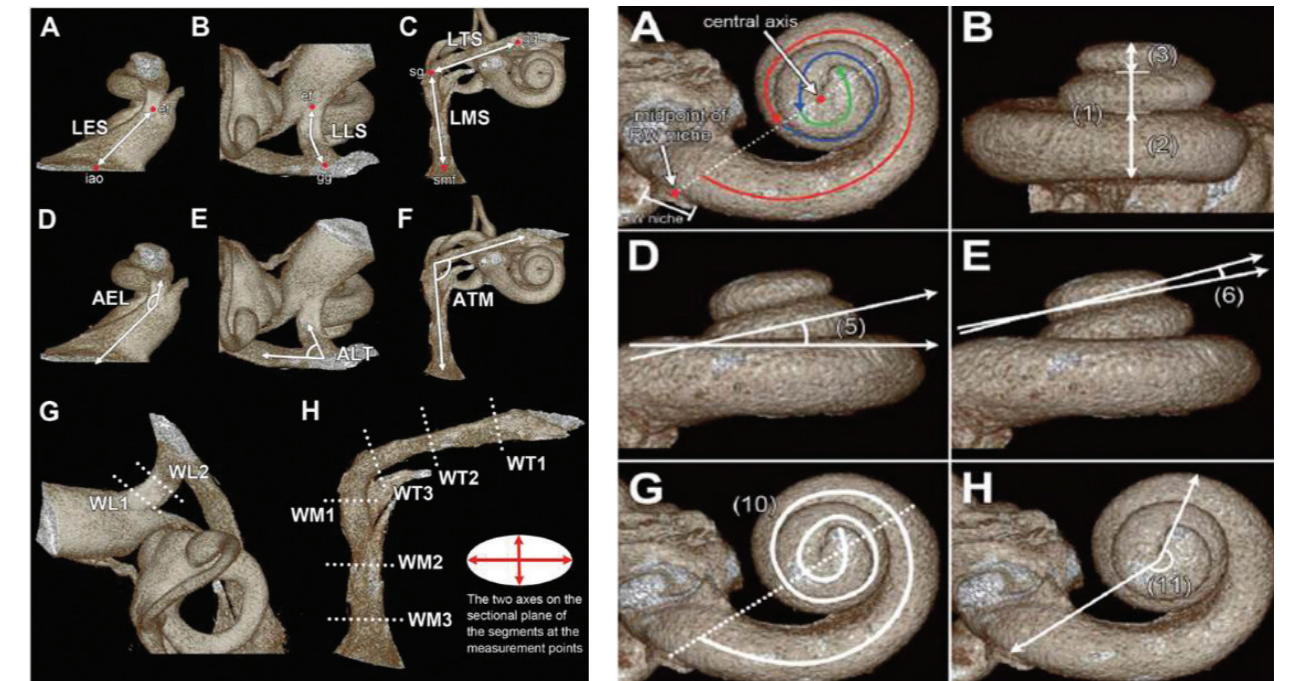
- 2014 Chairman: Korean Association of Physical Anthropologists
- 1985-Present Member: Korean Association of Physical Anthropologists
- 1985-Present Member: Korean Association of Anatomists
- 2001-Present Professor: Konkuk University School of Medicine
- 1996-2001 Associate professor: Konkuk University School of Medicine
- 1993-1996 Assistant professor: Konkuk University School of Medicine
- 1989-1993 Assistant professor: Sangji University
- 1985-1989 Assistant: Yonsei University College of Medicine

Top 5 Publications

- Gil YC, Shin KJ, Lee JY, Hu KS, Kim HJ, Song WC, **Koh KS**: Topographic anatomy of the ulnar tunnel. Surg Radiol Anat 37(7):757-764, 2015
- Shin KJ, Gil YC, Lee JY, Kim JN, Song WC, **Koh KS**: Three-dimensional study of the facial canal using microcomputed tomography for improved anatomical comprehension. Anat Rec 297(10):1808-1816, 2014
- Shin KJ, Lee JY, Kim JN, Yoo JY, Shin O, Song WC, **Koh KS**: Quantitative analysis of the cochlea using three-dimensional reconstruction based on micro-computed tomographic images. Anat Rec 296(7):1083-1088, 2013
- Lee JY, Shin KJ, Kim JN, Yoo JY, Song WC, **Koh KS**: A morphometric study of the semicircular canals using micro-CT images in three-dimensional reconstruction. Anat Rec 296(5):834-839 2013
- Lee JY, Kim JN, Yoo JY, Hu KS, Kim HJ, Song WC, **Koh KS**: Topographic anatomy of the masseter muscle focusing on the tendinous digitation. Clin Anat 25(7):889-892, 2012

RESEARCH INTERESTS

1. Three-Dimensional Morphometric Study of Inner Ear



2. Physical Anthropology of Head and Face in Korean

